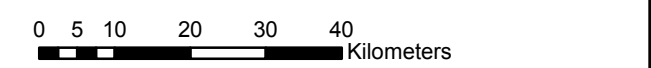
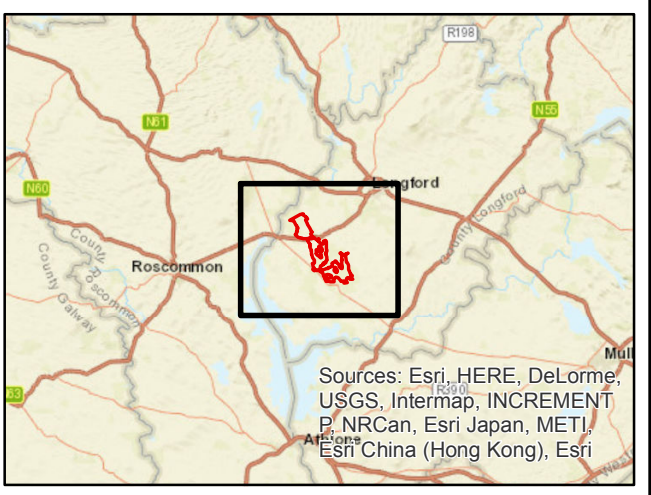


Legend

- Proposed Site Boundary
 - ◆ Proposed Turbine Locations
 - ✱ Proposed Met Mast Locations
 - ✱ Existing Met Mast Locations
 - Road Layout
 - Proposed Substation Options
 - Borrow Pit Locations
 - Temporary Construction Compounds
- Soil Description**
- Acid Deep Poorly Drained Mineral, AminPD
 - Acid Deep Well Drained Mineral, AminDW
 - Acid Poorly Drained Mineral Soils with Peaty Topsoil, AminPDPT
 - Acid Shallow Poorly Drained Mineral, AminSP
 - Acid Shallow Well Drained Mineral, AminSW
 - Acid Shallow, lithosolic or podzolic type soils potentially with peaty topsoil, AminSRPT
 - Basic Deep Poorly Drained Mineral, BminPD
 - Basic Deep Well Drained Mineral, BminWD
 - Basic Poorly Drained Mineral Soils with Peaty Topsoil, BminPDPT
 - Basic Shallow Poorly Drained Mineral, BminSP
 - Basic Shallow Well Drained Mineral, BminSW
 - Basic Shallow, lithosolic or podzolic type soils potentially with peaty topsoil, BminSRPT
 - Blanket Peat, BktPt
 - Cutaway/cutover peat, Cut
 - Fen peat, FenPt
 - Lacustrine Type Soils, Lac
 - Made/Built land, Made
 - Mineral Alluvium,
 - Water



Sources: Esri, HERE, DeLorme, USGS, Intermap, INCREMENT P, NRCan, Esri Japan, METI, Esri China (Hong Kong), Esri Korea, Esri (Thailand), MapmyIndia, NGCC, © OpenStreetMap contributors, and the GIS User Community

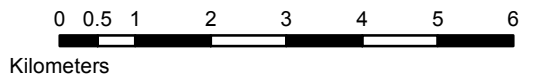


**Derryadd
Wind Farm**



The constraints shown are draft only and subject to change. More detailed assessments, on-going studies and information received may result in changes to these constraints.

Coordinate System: IRENET 95 Irish Transverse Mercator
Source: Geological Survey of Ireland



Scale: 1:100,000 when reproduced A3 size



**Figure No.
7.2**

Regional Soils Rev.01

Drawn By:	Ewa Młodawska
Checked by:	Laura Burke
Date:	23/01/2019